

Classic Ball Knob Locking Claw Fastener

1075

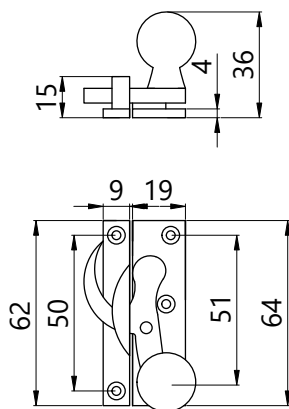


Features

- Classic Locking Claw Fastener with narrow keep.
- Lockable with hex key (supplied).
- Successfully tested to PAS24.
- Manufactured from Solid Brass and supplied with matching stainless steel fixings.



Dimensions



Distinctive finishes are a hallmark of Hardwick Classic ironmongery.



Antique
Brass



Chrome
Plated



Polished
Brass



Satin
Brass



Satin Chrome
Plated



Trojan
Bronze