



# HARDWICK

CLASSIC RANGE

## 2060/2061

Classic Lyndon Locking Nightvent  
Fastener



- ▶ Lockable by way of an M4 hex key.
- ▶ Wedgeplate, screws and hex key included.
- ▶ Manufactured from Solid Brass.



Polished Brass (PB)



Chrome Plated (CP)



Satin Chrome Plated (SCP)



Antique Brass (AB)

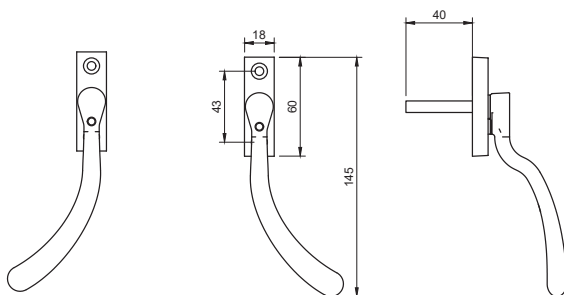


Satin Brass (SB)



Tudor Bronze (TB)

Distinctive finishes are the hallmark of Hardwick Classic ironmongery - for more detail and maintenance information visit: [www.hardwick.co.uk/pages/finishes](http://www.hardwick.co.uk/pages/finishes)



2050 (LEFT HAND)

2051 (RIGHT HAND)



**View product online**

FINEST BRASSWARE TO ENHANCE  
QUALITY DOORS AND WINDOWS

[www.hardwick.co.uk](http://www.hardwick.co.uk)